

# MONTHLY MEMBERSHIP PROGRESS REPORT

LOCATION ALBERTA

District C 2

Results as of: 6/30/2023

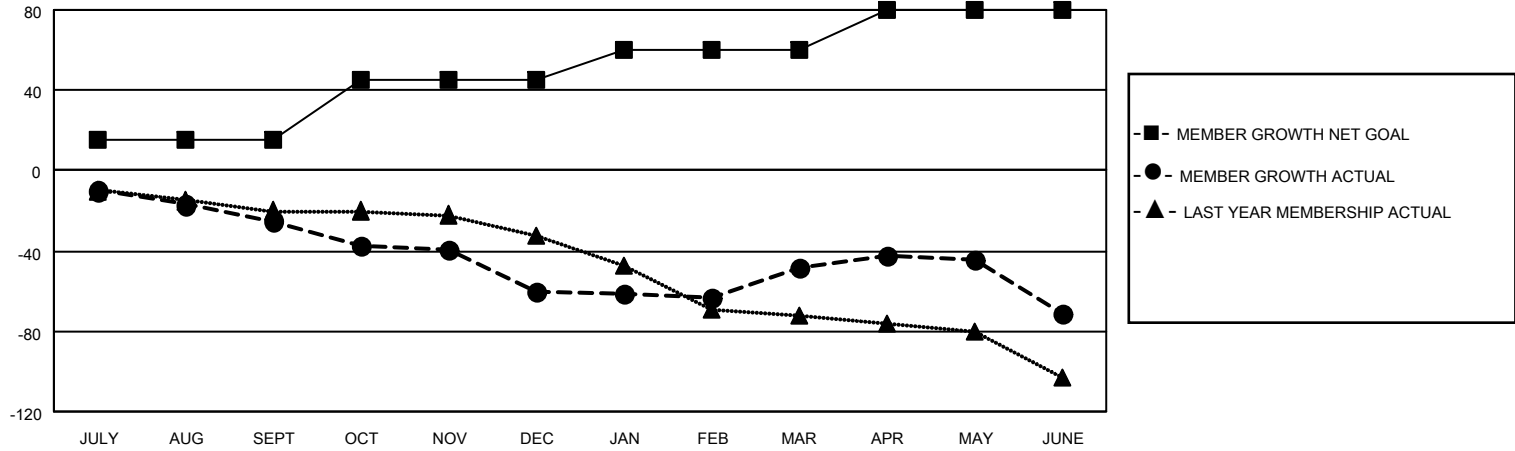
Clubs			
RESULTS FOR 2022-2023			
QUARTER	NEW CLUB GOAL	NEW CLUBS	DROPPED CLUBS
JULY/AUG/SEPT	0	0	0
OCT/NOV/DEC	1	0	0
JAN/FEB/MAR	0	0	0
APR/MAY/JUNE	0	0	3

Members			
RESULTS FOR 2022-2023			
QUARTER	MEMBER GROWTH NET GOAL	MEMBER GROWTH ACTUAL	DROPPED MEMBERS ACTUAL (including transfers)
JULY/AUG/SEPT	15	30	53
OCT/NOV/DEC	30	26	59
JAN/FEB/MAR	15	60	43
APR/MAY/JUNE	20	55	75

**GOALS AND ACTUAL NEW CLUBS CUMULATIVE**



**GOALS AND ACTUAL MEMBERS CUMULATIVE**



DROPPED CLUBS: 3	
<b>DROPPED MEMBERS</b>	
DECEASED	31
CLUB CANCELLED	17
OTHER	183
<b>TOTAL</b>	<b>231</b>

50 CLUBS OF 86 ADDED 1 OR MORE NEW MEMBERS

[CLICK HERE FOR CUMULATIVE MEMBERSHIP DATA](#)

<u>GENDER DISTRIBUTION</u>	
MALE	1,294 (73.69%)
FEMALE	461 (26.25%)
NON BINARY	0 (0.00%)
PREFER NOT TO ANSWER	1 (0.06%)
<b>TOTAL FAMILY UNIT MEMBERS</b>	<b>270</b>
<b>FAMILY MEMBERS PAYING HALF DUES</b>	<b>138</b>